



2011 EBT Istanbul Open

Oil Per Board: 50 uL Oil Pattern Distance: 38 Feet Volume Oil Total: 27.15 mL Total Boards Crossed: 543 Boards

Forward Oil Total: 12.95 mL
Forward Boards Crossed: 259 Boards

Reverse Oil Total: 14.2 mL
Reverse Boards Crossed: 284 Boards

Notes

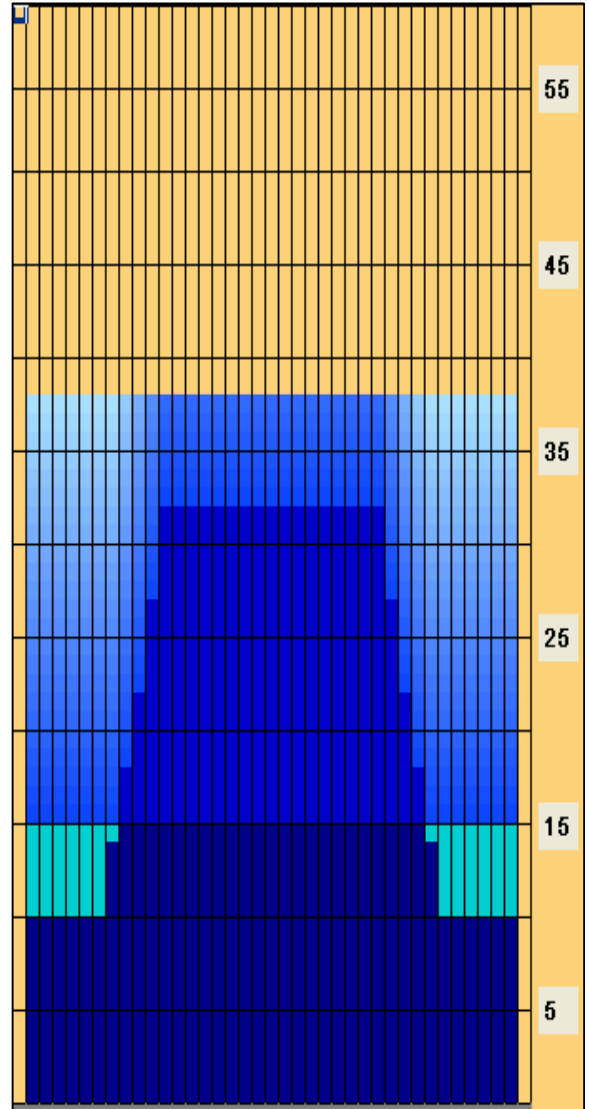
Conditioner:
Navigate

TransferType:
Transfer Brush

	Start	Stop	Loads	Speed	Crossed	Start	End	Feet	T.Oil
1	2L	2R	6	18	222	0.0	12.7	12.7	11100
2	2L	2R	1	18	37	12.7	15.2	2.5	1850
3	2L	2R	0	26	0	15.2	36.0	20.8	0
4	2L	2R	0	30	0	36.0	38.0	2.0	0

	Start	Stop	Loads	Speed	Crossed	Start	End	Feet	T.Oil
1	2L	2R	0	30	0	38.0	32.0	-6.0	0
2	12L	12R	2	18	34	32.0	26.9	-5.1	1700
3	11L	11R	2	18	38	26.9	21.8	-5.1	1900
4	10L	10R	2	14	42	21.8	17.9	-3.9	2100
5	9L	9R	2	14	46	17.9	14.0	-3.9	2300
6	8L	8R	2	14	50	14.0	10.1	-3.9	2500
7	2L	2R	2	14	74	10.1	6.2	-3.9	3700
8	2L	2R	0	10	0	6.2	0.0	-6.2	0

- Forward
- Reverse
- Combined
- Buff



Arrow Zone Ratios

Item	2-5L:16L-20	6-10L:16-20	11-15L:16L-20	16L-20:20-16R	16L-20:20-16R	20-16R:15-11R	20-16R:10-6R	20-16R:5-2R
ul Arrow	450	570	930	950	950	930	570	450
Zone Ratio	2.11	1.67	1.02	1	1	1.02	1.67	2.11

Track Zone Ratios

Item	3L-7L:18L-18R	8L-12L:18L-18R	13L-17L:18L-18R	18L-18R:17R-13R	18L-18R:12R-8R	18L-18R:7R-3R
Description	Outside Track:Middle	Middle Track:Middle	Inside Track:Middle	Middle: Inside Track	Middle:Middle Track	Middle:Outside Track
Track Zone Ratio	2.11	1.27	1	1	1.27	2.11

