



# 2010 EBT Istanbul Open



Oil Pattern Distance: 37 Feet    Oil Per Board: 50 uL    Volume Oil Total: 27.1 mL    Total Boards Crossed: 542 Boards

Forward Oil Total: 13.75 mL  
Forward Boards Crossed: 275 Boards

Reverse Oil Total: 13.35 mL  
Reverse Boards Crossed: 267 Boards

	Start	Stop	Loads	Speed	Crossed	Start	End	Feet	T.Oil
1	2L	2R	2	14	74	0.0	1.9	1.9	3700
2	5L	5R	2	14	62	1.9	5.8	3.9	3100
3	6L	6R	2	18	58	5.8	10.9	5.1	2900
4	7L	7R	3	18	81	10.9	18.5	7.6	4050
5	2L	2R	0	18	0	18.5	26.0	7.5	0
6	2L	2R	0	26	0	26.0	37.0	11.0	0

Forward Reverse More Info

	Start	Stop	Loads	Speed	Crossed	Start	End	Feet	T.Oil
1	2L	2R	0	30	0	37.0	28.0	-9.0	0
2	8L	8R	1	18	25	28.0	25.5	-2.5	1250
3	7L	7R	2	18	54	25.5	20.4	-5.1	2700
4	6L	6R	2	14	58	20.4	16.5	-3.9	2900
5	5L	5R	2	14	62	16.5	12.6	-3.9	3100
6	4L	4R	1	14	33	12.6	10.7	-1.9	1650
7	3L	3R	1	14	35	10.7	8.8	-1.9	1750
8	2L	2R	0	14	0	8.8	0.0	-8.8	0

Forward Reverse More Info

Conditioner:  
Navigate

TransferType:  
Transfer Brush

Forward



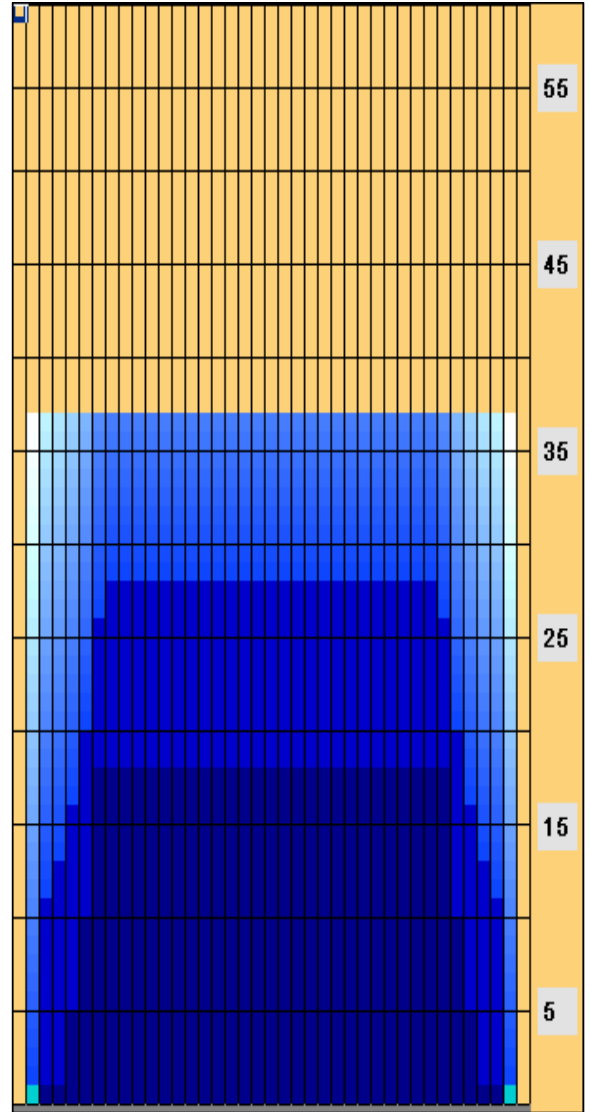
Reverse



Combined



Buff



Lane Surface: AMF SPL (High Friction)

Item	3L-7L:18L-18R	8L-12L:18L-18R	13L-17L:18L-18R	18L-18R:17R-13R	18L-18R:12R-8R	18L-18R:7R-3R
Description	Outside Track:Middle	Middle Track:Middle	Inside Track:Middle	Middle: Inside Track	Middle:Middle Track	Middle:Outside Track
Track Zone Ratio	2.05	1	1	1	1	2.05

